



N S 1 7 0 M O D E L

serrfire[®]

**SOUND PROOF
ACOUSTIC
ROLLER SHUTTER**

38 dB 



info@serrfire.com



www.serrfire.com



Certificate

Insulated roller shutter (Rw=38,5 dB)
Certificate No : LAB17-DS/194 dated 08.04.2020

Accreditations

EN ISO 10140-2 : 2013 – Measurements of Airborne Sound Insulation

Performance Characteristics:

Sound reduction index Rw (C; Ctr)=38,5 (-2;-7) dB according to EN ISO 717-1:2013

Ideal Uses

Loading Bays, Warehouses, Factories, Hospitals, Large commercial buildings, Boiler and Turbine Halls, Airports, Canteens, Restaurants, Recording and TV Studios, Cultural Centers, Opera Houses and Ballrooms.

TECHNICAL SPECIFICATIONS

Profile / Curtain

Profiles / Curtains made of galvanized interlocking roll-formed steel, double-skinned, sheet thickness from 1,40mm to 2,00mm and 100mm flat slat with infilled special high performance insulation sound barrier materials.

Side Guides

Side guides made of galvanized steel U type profiles, 150x200mm dimension and 3,00mm thickness made by press break bending method and have an acoustic sound barrier and a 10,00mm thickness bristle brush for quiet movement and less vibration at the both sides.

Endplates

Manufactured from galvanized steel of adequate thickness between 3,00mm and 20,00mm with special steel bending design, relative to door size and supplied with steel plates for fixing to the structure.

Finish

SERRFIRE shutters are finished in standard galvanised steel. Polyester powder coat in a range of RAL colour are available on request.

Control Panel

Surface-mounted type control unite in a metal box with integrated keypad up-stop-down on the drive side with hold to run button at handy height. It is designed in accordance with smart building automation systems.

The technical specifications of the control panels are also equipped according to the motor powers to be used. The control pannel has diode overload protection and diode break protection feature. It has the features of remote on-off, remote monitoring system, audio-visual sound signal when the door is working and battery back-up facility where maintained power is required according to the dimensions in the control panel. Audio visual warning.

Options

- Key-switch control, Motor cover hood, Remote control, Loop detectors, Photocells, Timer closing, Other colours, Integral frame and Coil Casing / Hood.
- For Coil Casing / Hood, it made of galvanised steel and 'U or L type' profile cover fastened to the lintel into which the top of the door engages for coiled shutter and motor providing an effective seal against the passage of noise. It will be produced by the press break bending method according to the quality and characteristics of the place to be used and sound barrier or rock wool will be used as the inner filling.
- For Integral frame, in order to provide the desired decibel value, the decibel value of the existing wall and the area where the door will be made should be better than the desired sound decibel value at the door. The internal frame profiles, where the door will be mounted, need to be backed up with acoustic materials in a way that will provide the acoustic values after the assembly.

Technical support will be provided to the construction site after order confirmation.

Operation / Drive

Electric Drive 3Ph 400V / 50 Hz, protection class IP54, directly coupled to the winding shaft, thermal motor protection, upper and lower limit switch for the control and main current circuit. Emergency hand-crack or hand-chain with safety contact. Wide range of drive torques is available based on curtain weight. Also specially designed in accordance with smart building automation systems.

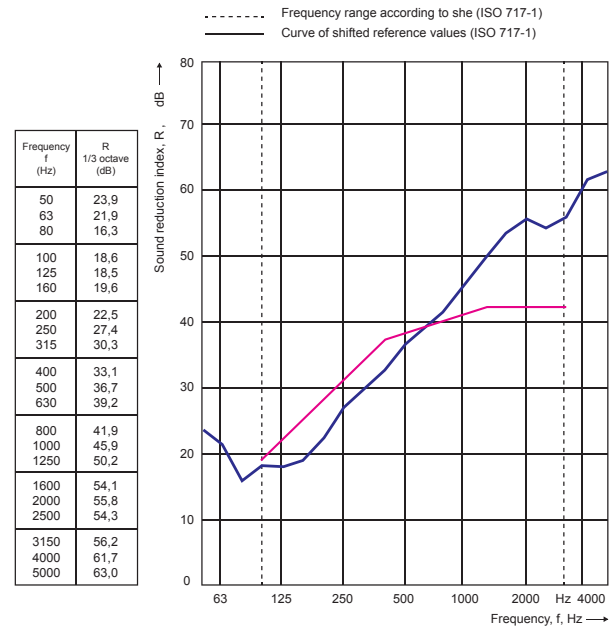
Bottom Rail

Bottom rail made of galvanized steel profile, have an acoustic sound barrier both inside and at the point of contact with the ground.

Roller / Barrel

The roller / barrel comprises a steel tube of suitable diameter and thickness to avoid deflection. Steel shafts and discs are inserted at each end and the whole assembly is supported at each end on the end brackets.

TEST RESULTS



Rating according to ISO 717-1
R_w (C; C_{tr})=38,5 (-2;-7) dB
Evaluation based on laboratory measurement results obtained in one-third-octave bands by an engineering method.

C₅₀₋₃₁₅₀ = -2 dB C₅₀₋₅₀₀₀ = -1 dB C₁₀₀₋₅₀₀₀ = -1 dB
C₅₀₋₃₁₅₀ = -6 dB C₅₀₋₅₀₀₀ = -6 dB C₁₀₀₋₅₀₀₀ = -7 dB

Maximum Sizes

12,000mm wide x 12,000mm high

(Please contact us to discuss if there is a requirement beyond these dimensions)

Headquarters

Reşitpaşa Mh. Denizbank Sit. Sk. No:12, Sarıyer / İstanbul

Factory

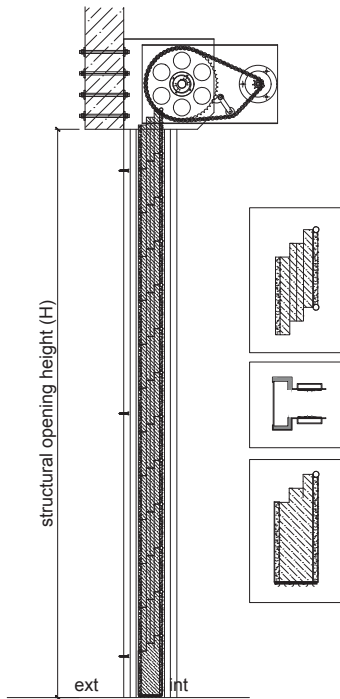
Adnan Kahveci Mh. Çankaya Cd. Simay İş Merkezi No: 3 Kapı No:1-2, Beylikdüzü / İstanbul

info@serrfire.com www.serrfire.com

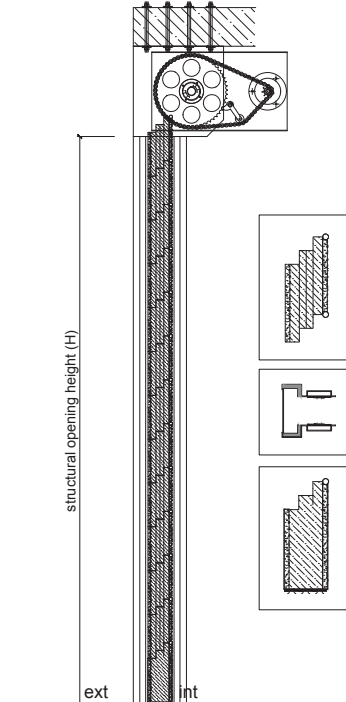


WALL SURFACE INSTALLATION

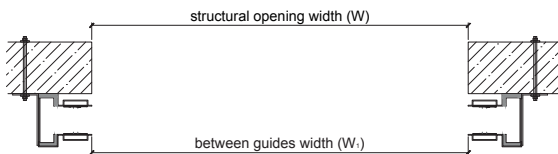
UNDER THE LINTEL INSTALLATION



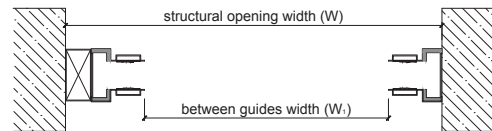
Section



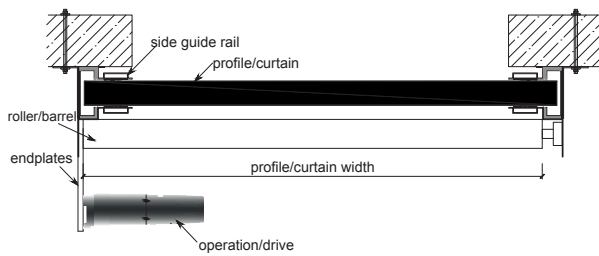
Section



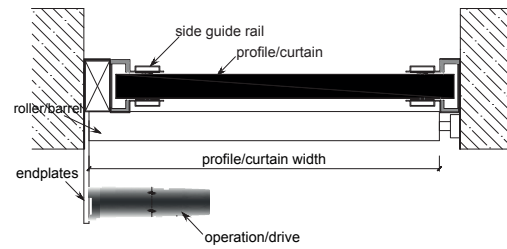
Plan at Guide Level



Plan at Guide Level



Plan at Roller/Barrel Level



Plan at Roller/Barrel Level



